

DATA COLLECTOR USER'S MANUAL



I. Collect Data *Key Layout:*

Alphanumeric keypad is set to numeric mode by default. The [FN/ALPHA] as a toggle among in numeric, alpha (lower-case alphabetic), ALPHA (upper-case alphabetic) input modes.

Note: It is not necessary to hold down the FN/Alpha key.

The associated icon will appear on the lower-right corner of the screen in a sequence as shown below.

Screen Icon	FN/ALPHA KEY	Input Mode
(none)	N/A	Numbers
<u>A</u>	Press [FN/ALPHA] one time	Upper-case alphabetic
<u>a</u>	Press [FN/ALPHA] two times	Lower-case alphabetic
<u>F</u>	Press [FN/ALPHA] three times	Function mode

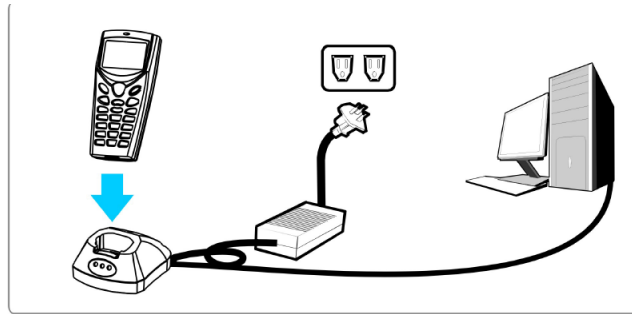
Process:

1. After clicking the **Power On** button the device selection menu will display.
2. Click **Enter/OK** button.
3. Input the Store Name then click **Enter/OK** button.
4. Next input the Sell/Stock area
5. After inputting the Sell/Stock area click **Enter/OK** button.
6. Then input the name of the Checker press **Enter/OK** button again.
7. Press the **Scan** button to get the barcode of the item.
8. Next input the number of quantity.
9. Then click **Enter/OK** button.
10. To scan another items repeat the steps from STEP 6 – STEP 8.

Note: If you want to change the Store Name, Sell/Stock area and Checker click the Back/Cancel button once for you to return in STEP 3.

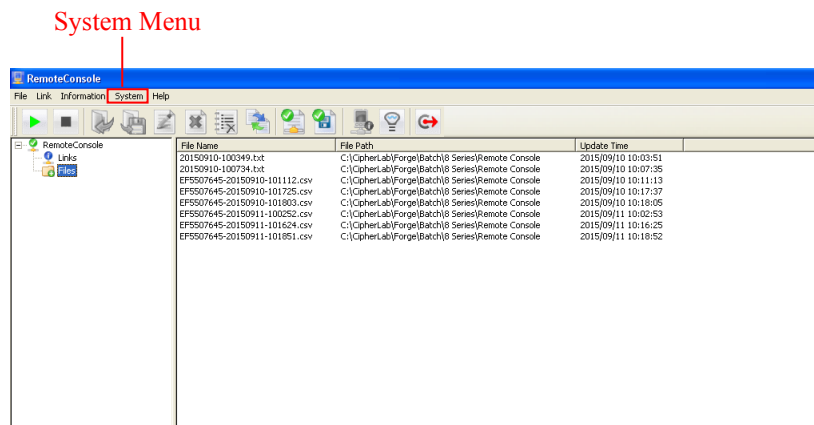
II. Upload Data

Note: Before you start the steps in uploading data, be sure that your device was properly connected to your Computer same as the figure shown below.



Process:

1. Open **Remote Console** application installed in your computer.



*Note: If **Remote Console** window did not display after clicking the application. See the **Toolbars** then look for the icon of **Remote Console***





Point the mouse in the icon.

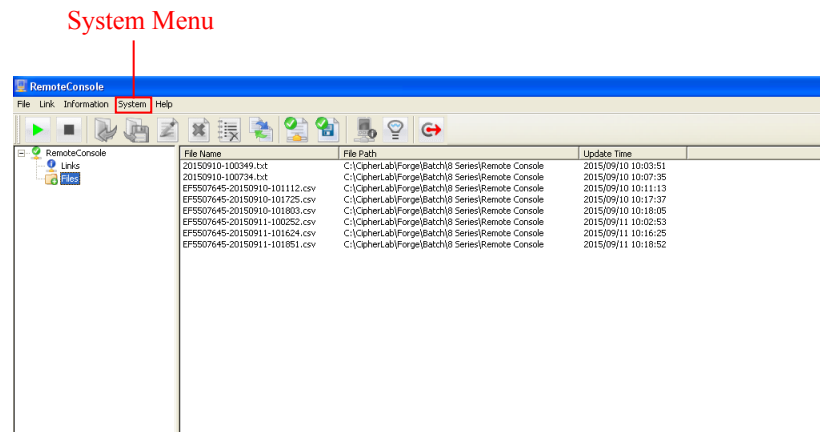
Next right click.

*Then select/choose **Maximise**.*

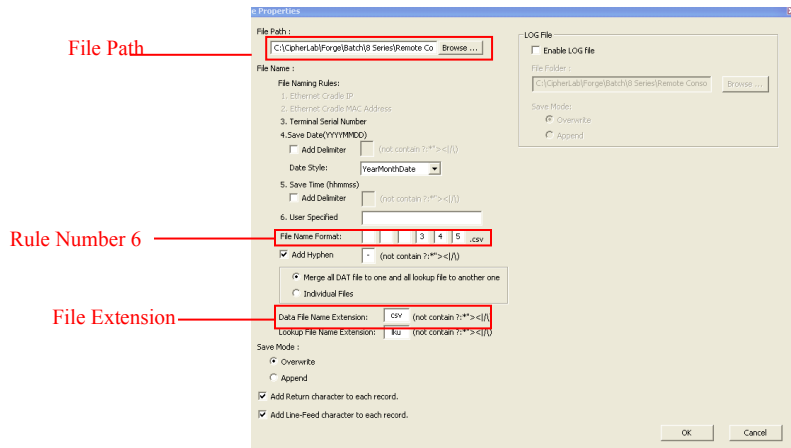
2. Click **System** menu placed on the upper part of the **Remote Console** window.
3. Next Click the **Link Properties**.
4. In the **Link Property Window**, click the dropdown button inline with label/word **Interface**.
5. Next choose/select **Cradle IR**.
6. Then beside **Port** input 9, to assign which data collector the user wants to access/connect.

7. After assign the data collector, go back on the device (data collector) choose the **Upload** menu, by just simply clicking the drop down button then press **Enter/OK** button (after turning on the device). Wait until the device is totally connected.
8. Next go back to the System (**Remote Console**) click the **Play/Start** button  placed on the left side upper part of the window. Wait until the Data Collector device will display a message that states “Sending Transf.: done”.
9. Then data collector will ask which data user wants to delete, just choose one and then press **Enter/OK** button.
10. A confirmation message will display then just choose if Yes/No and click **Enter/OK** button.
11. Then click the **Stop** button  placed beside the **Play/Start** button in **Remote Console** window.
12. To view the uploaded file, go back to the **Remote Console** window.
13. On the left side of the window click **Files** and the uploaded files will display.

III. File Format



1. In the **Remote Console** window click **System** menu.
2. Next select **File Properties**.
3. File naming rules will display.



4. In rule number **6**, beside **File Name Format** label input the number of rule you want to include in saving/uploading the file/data in the textbox provided.
5. The series of the inputted rule numbers are the basis which rule number will comes first in uploading/saving the file.
6. User can set the path where the file should be uploaded by simply clicking browse in the **File Path** layer.
7. Next select the location and click **OK**.
8. User can also set the extension name of the file by simply inputting the extension name in the textbox placed beside the label **Data Filename Extension**.
9. Then click **OK** button.