

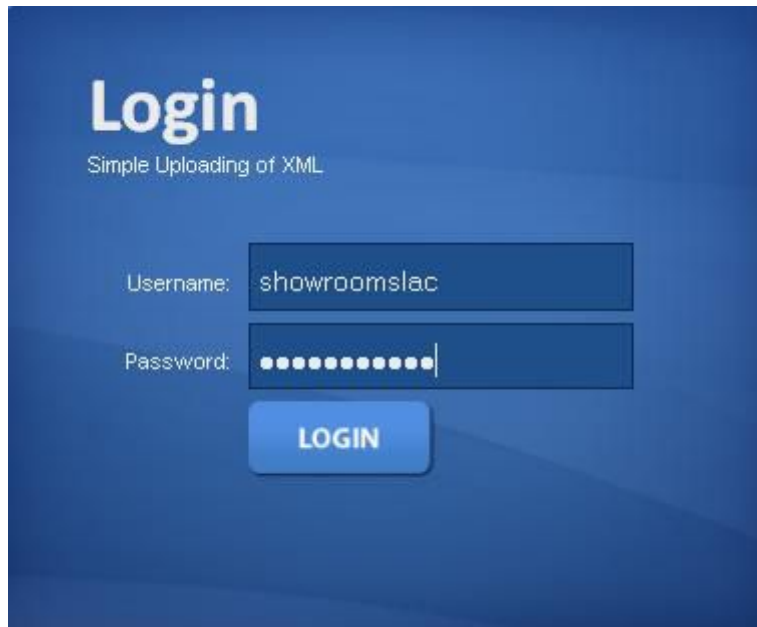
Simple SLAC-POS XML uploader

Created by: Application Development Team

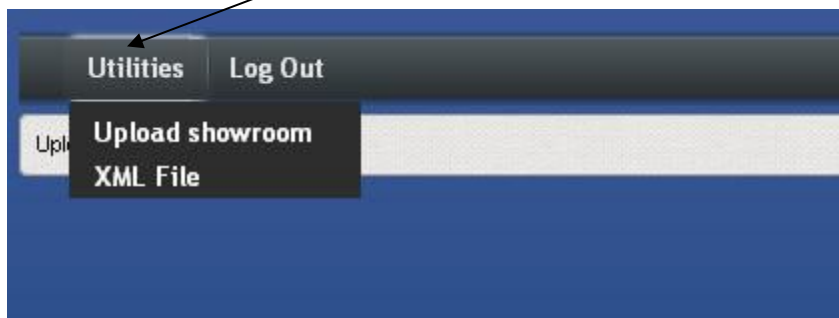
Mr. Oliver Sta Maria / Mr. Jeremy C. Miravalles

This is how to upload your xml file

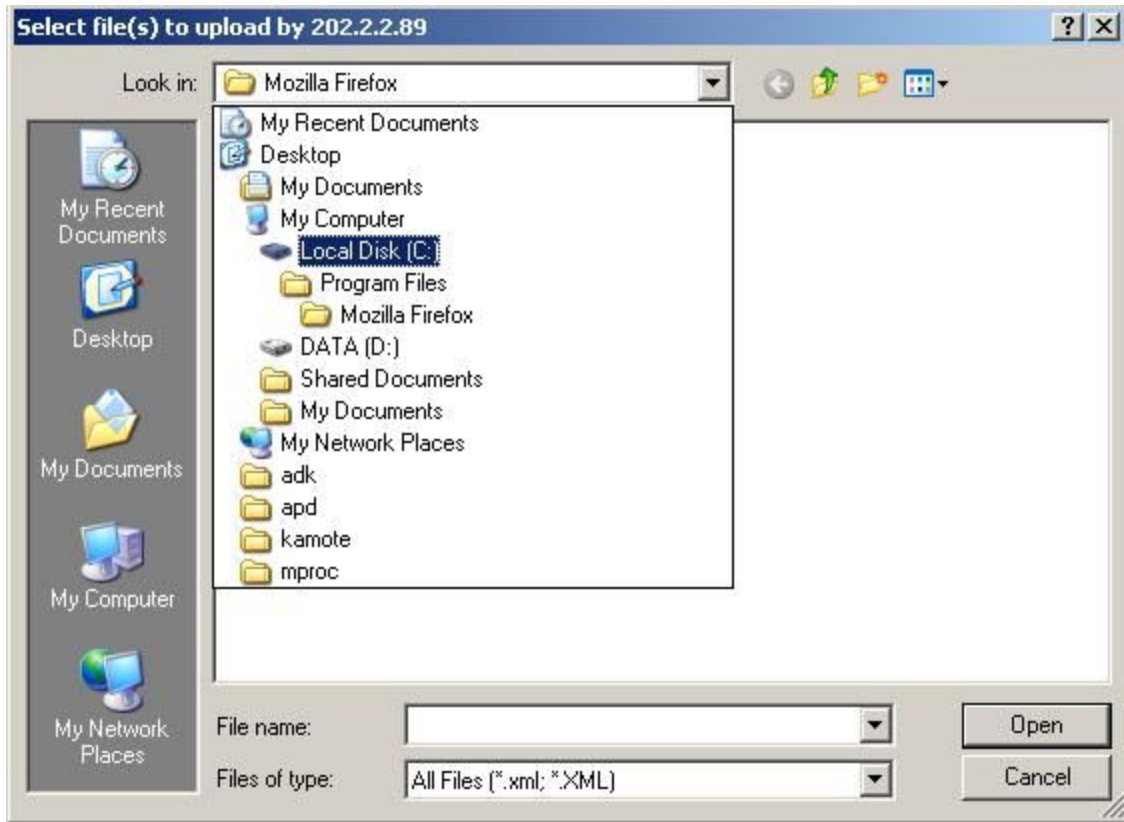
1. First go to <http://202.2.2.89/apps/showroomuploader/mylogin.php>
2. Next Login your username and password



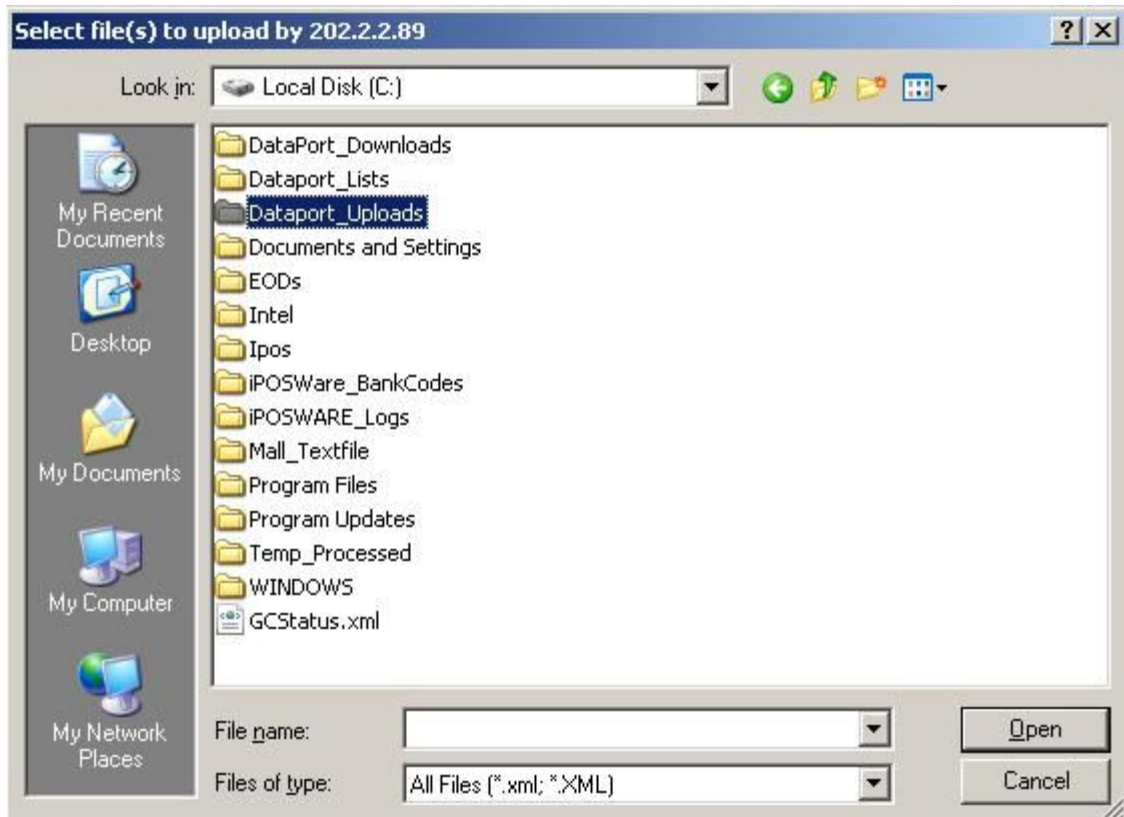
3. After Login your username and password go to utilities and click Upload showroom XML file



4. After clicking go to Local C: then



5. Go to Dataport_Uploads folder



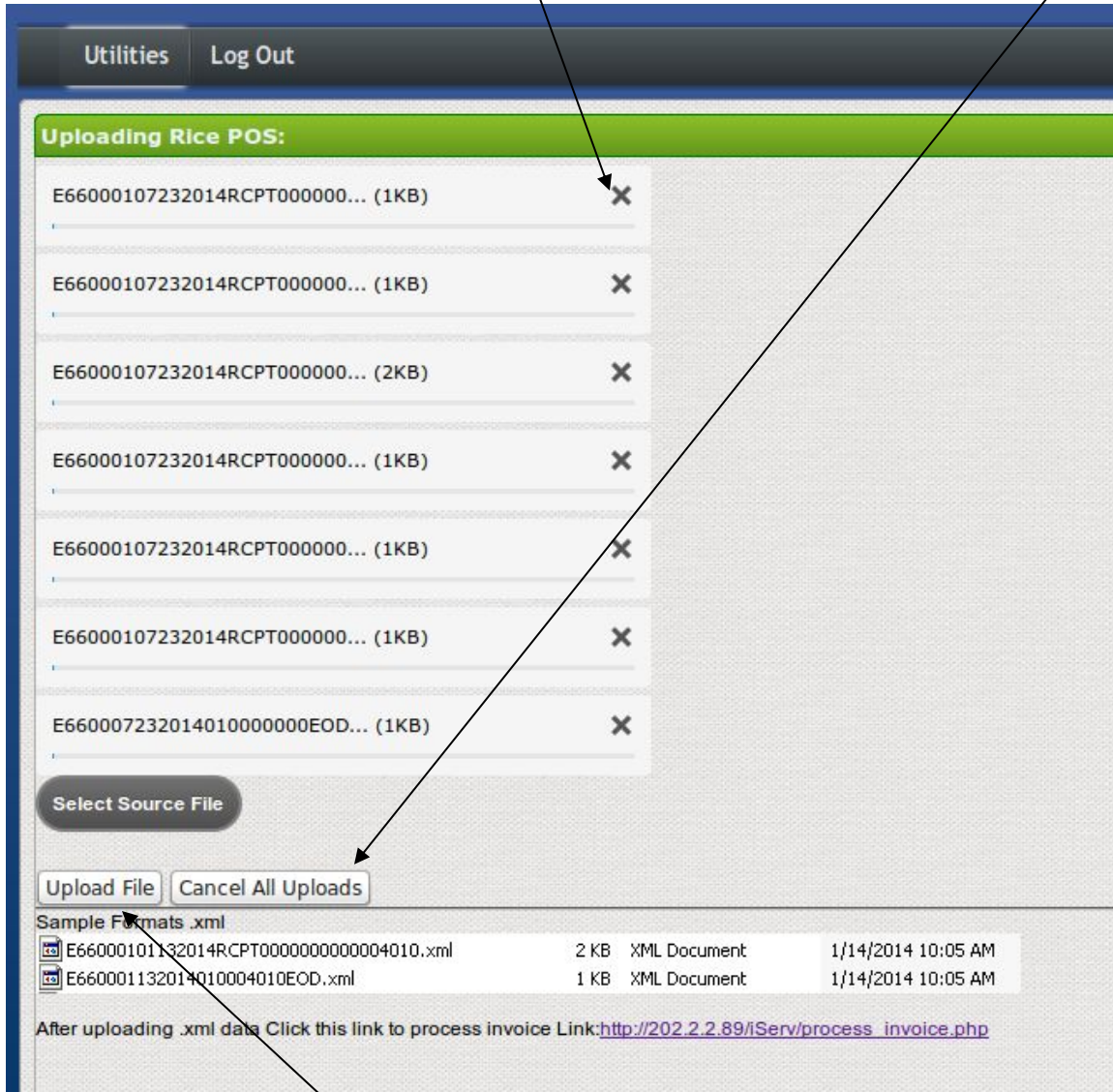
6. On the Dataport_Uploads folder select the xml file that u need to upload..



7. After getting the xml file from the folder you will see the upload xml file

Note: check the file carefully click the **X** button if the file is not needed or click To cancel all xml file

Cancel All Uploads



8. After checking click the **Upload File**

9. After clicking the upload file the xml file is complete or already uploaded..

Utilities Log Out

Uploading Rice POS:

- E66000107232014RCPT000000... (1KB) - Complete X
- E66000107232014RCPT000000... (1KB) - Complete X
- E66000107232014RCPT000000... (2KB) - Complete X
- E66000107232014RCPT000000... (1KB) - Complete X
- E66000107232014RCPT000000... (1KB) - Complete X
- E66000107232014RCPT000000... (1KB) - Complete X
- E660007232014010000000EOD... (1KB) - Complete X

Select Source File

Upload File Cancel All Uploads

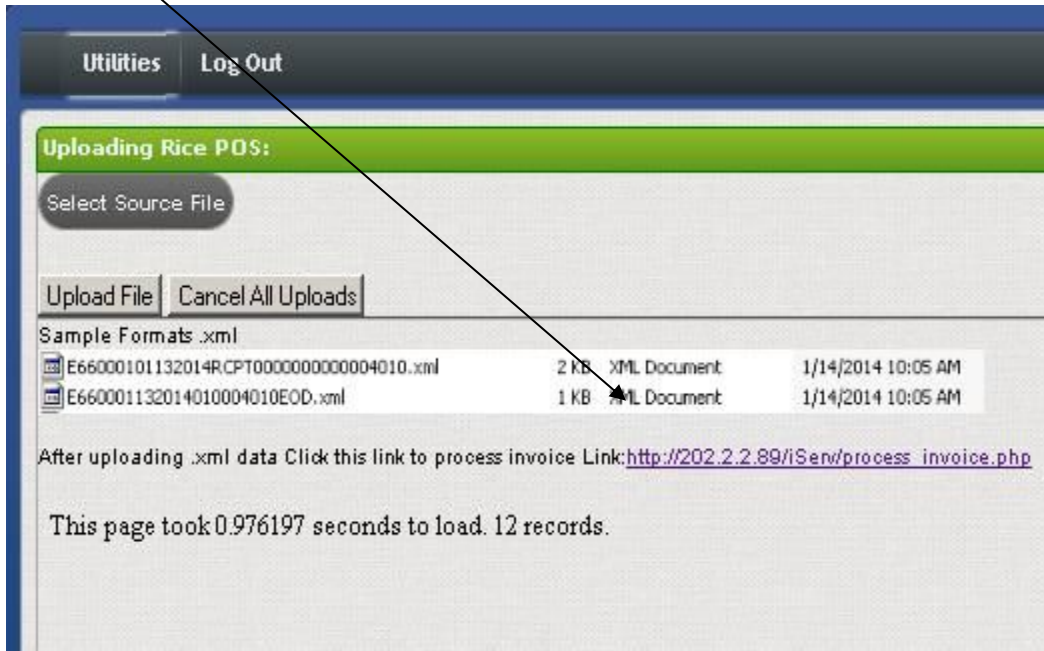
Sample Formats .xml

E66000101132014RCPT0000000000004010.xml	2 KB	XML Document	1/14/2014 10:05 AM
E660001132014010004010EOD.xml	1 KB	XML Document	1/14/2014 10:05 AM

After uploading .xml data Click this link to process invoice Link:http://202.2.2.89/iServ/process_invoice.php

10. And the Last go to the link of process invoice to finish your downloading by easily click

This link Make sure you load all the record click the link until the records become 1 records..



Congrats Well done ☺....