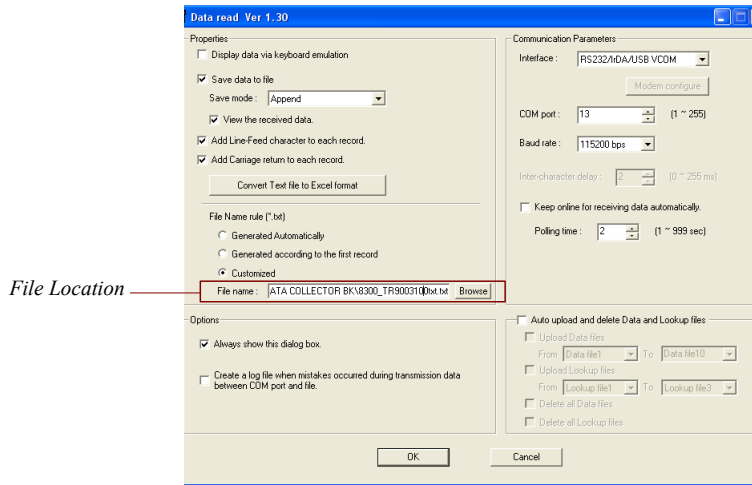


## Upload Data from Data Collector

1. Open **Data Reader.exe** application installed to your PC.



### For 8001 Data Collector :

- A. Set where the file will be save.  
Sample Path For 8001 Data Collector : 8001\_(File Name).txt
- B. Look at the **Communication Parameter** section.
- C. Set the interface as **Cradel-IR**.
- D. Input the COM Port.
- E. Next set the Baud Rate as 9600bps.
- F. Then click **OK** button.
- G. Get the Data Collector.
- H. Go to **Utilities**.
- I. Then select **Settings**.
- J. Next **Upload Port**.
- K. Select/set the port as **Cradel – IR** then click **OK** button.
- L. After clicking OK button, select **Baud Rate** then click **OK** button.
- M. Set the Baud Rate to 9600bps then click **OK** button.
- N. Click ESC twice (to return to the main menu).
- O. Select **Upload** and click OK button.
- P. And the file will automatically be uploaded.

### For 8300 Data Collector :

- A. Set where the file will be save.  
Sample Path For 8300 Data Collector : 8300\_(File Name).txt
- B. Look at the **Communication Parameter** section.
- C. Set the interface as **RS232/IRDA/USB/VCOM**.
- D. Input the COM Port.

- E. Next set the Baud Rate as 115200bps.
- F. Then click **OK** button.
- G. Get the Data Collector.
- H. Go to **Utilities**.
- I. Then select **Settings**.
- J. Next **Upload Port**.
- K. Select/set the port as **RS232/IrDA/USB/VCOM** then click **OK** button.
- L. After clicking OK button, select **Baud Rate** then click **OK** button.
- M. Set the Baud Rate to 115200bps then click **OK** button.
- N. Click ESC twice (to return to the main menu).
- O. Select **Upload** and click OK button.
- P. And the file will automatically be uploaded.